

THOMAS BERDING

*Partial Resemblance, 2022 (detail)*  
Acrylic, flashe, and inkjet on canvas  
14 x 11 inches

Thomas Berding

*Everyday Elsewhere*

March 29 - April 23, 2022

**THE PAINTING CENTER**

547 West 27th Street, Suite 500, NY, NY 10001, 212-343-1060  
Tues 10-4 pm, Wed-Sat 11-6 pm, [www.thepaintingcenter.org](http://www.thepaintingcenter.org)





*After E.M., 2022*  
Acrylic, flashe, and inkjet on canvas  
14 x 11 inches

## Thomas Berding

The Painting Center is pleased to present *Everyday Elsewhere*, an exhibition of recent work by Thomas Berding in the Main Gallery and Project Room.

This solo exhibition of paintings by Thomas Berding continues the artist's mining of both the language of abstraction and digital and post-industrial refuse. Along with the inclusion of fragmented images culled from third class mailings, internet searches and other images often unmoored from their origins, his work draws from the history of abstract painting, DIY aesthetics, and observations on contemporary life. The resulting works project a haunting and speculative image of the world that exists somewhere between a salvage operation and an escapist's flight of fancy.

Thomas Berding was born in Cincinnati, Ohio and received an MFA from Rhode Island School of Design. His paintings have been widely exhibited and recognized with awards from the National Endowment for the Arts, Pollock-Krasner Foundation, and NEA/Mid America Arts Alliance. Berding currently lives and works in East Lansing where he is Professor of Studio Art at Michigan State University.

For more information on the artist, please visit [www.thomasberding.com](http://www.thomasberding.com).



*Anchor, 2022*  
Acrylic, flashe, and inkjet on canvas  
14 x 11 inches



*Broken Read*, 2022  
Acrylic, flashe, collage, and inkjet on canvas  
30 x 30 inches



*Love and Luxury, 2022*  
Acrylic, flashe, and collage on canvas  
20 x 16 inches

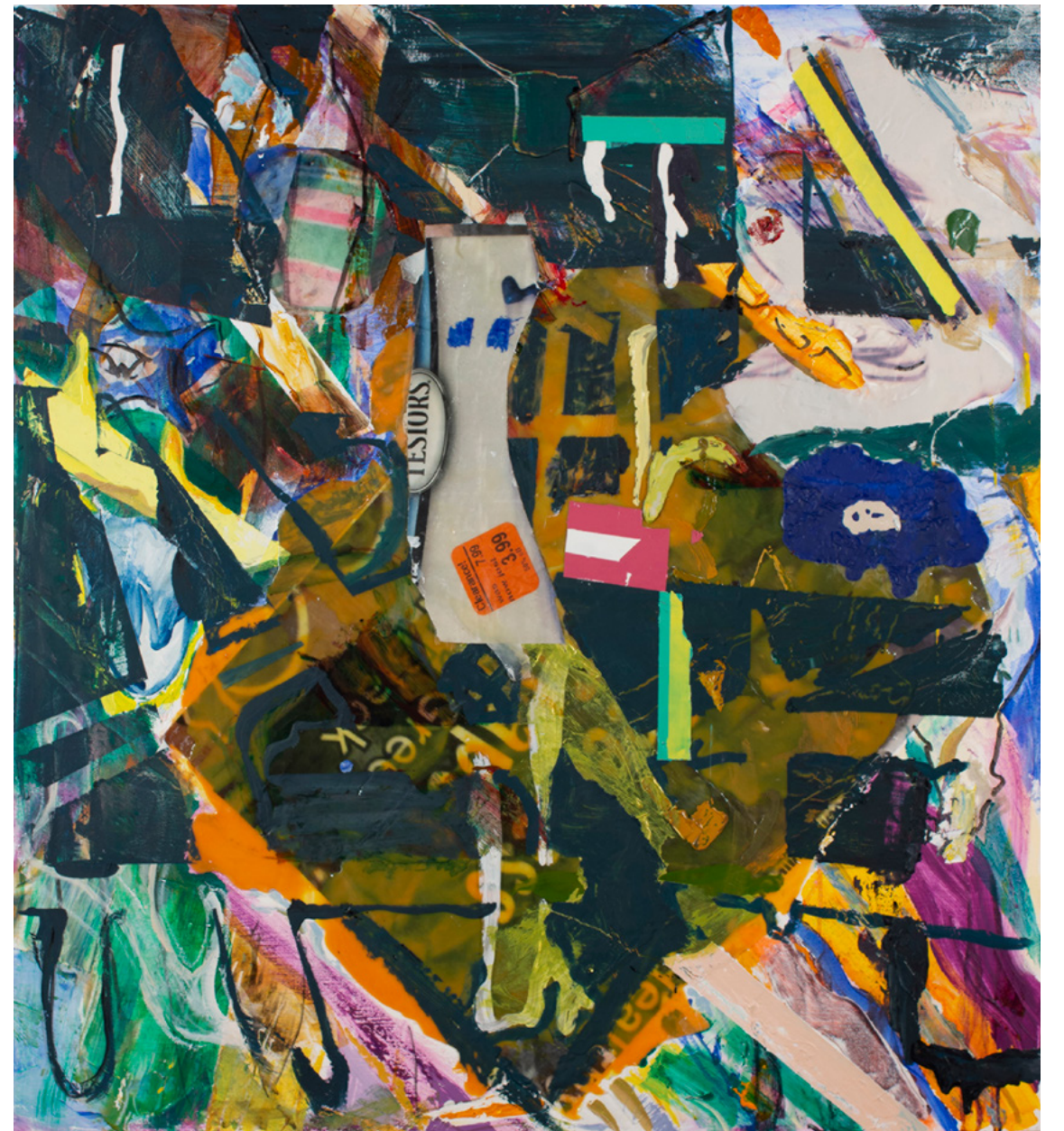




Seer, 2022  
Acrylic, flashe, and inkjet on canvas  
14 x 11 inches



*Specter in the Corner*, 2022  
Acrylic, flashe, and collage on canvas  
48 x 44 inches







*Specter in the Corner, 2022 (detail)*  
Acrylic, flashe, and collage on canvas  
48 x 44 inches



*Phantoms in a Pocket*, 2022  
Acrylic, flashe, and inkjet on canvas  
30 x 30 inches





*Pistol Assembly, 2022*  
Acrylic, flashe, and inkjet on canvas  
14 x 11 inches



*Projection Land, 2022*  
Acrylic, flashe, and inkjet on canvas  
14 x 11 inches





*Cascade*, 2022  
Acrylic, flashe, and collage on canvas  
20 x 16 inches







*Last Holiday, 2022*  
Acrylic, flashe, and inkjet on canvas  
14 x 11 inches

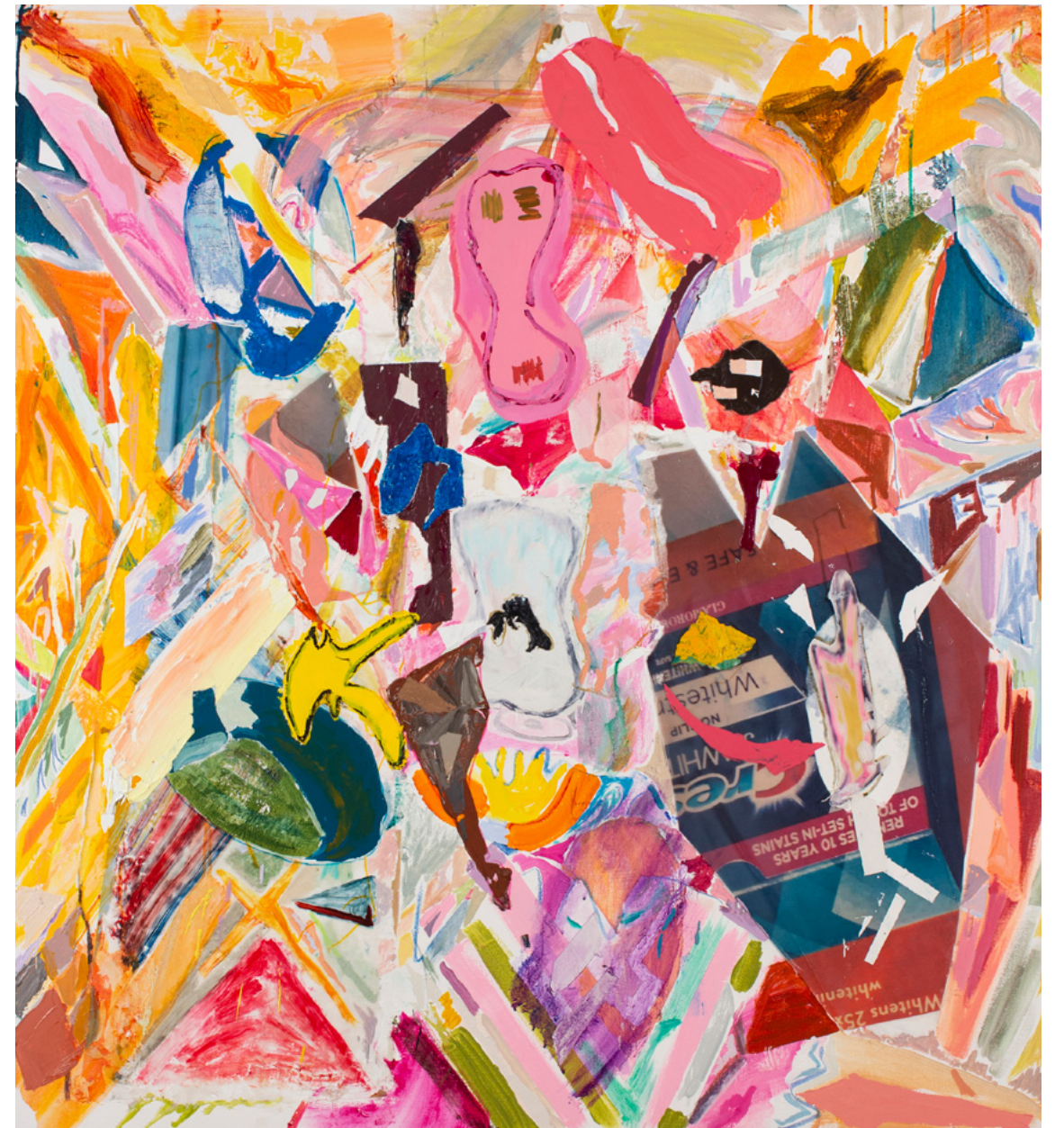


*Escape*, 2022  
Acrylic, and flashe on canvas  
14 x 11 inches





*The Unmooring*, 2022  
Acrylic, flashe, and collage on canvas  
48 x 44 inches





*The Unmooring*, 2022 (detail)  
Acrylic, flashe, and collage on canvas  
48 x 44 inches







*Slice and Dice*, 2022  
Acrylic, flashe, and inkjet on canvas  
14 x 11 inches





*Hangman, 2022*  
Acrylic, flashe, and collage on canvas  
20 x 16 inches

*Partial Resemblance*, 2022  
Acrylic, flashe, and inkjet on canvas  
14 x 11 inches





*Tumbler*, 2022  
Acrylic, flashe, and collage on canvas  
20 x 16 inches



*Crafting Nature, 2022*  
Acrylic, flashe, collage, and inkjet on canvas  
20 x 16 inches





*Breakout*, 2022  
Acrylic, flashe, and collage on canvas  
20 x 16 inches



*Unsettled States, 2022*  
Acrylic, flashe, and collage on canvas  
14 x 11 inches





*Divine Touch*, 2022  
Acrylic, flashe, and inkjet on canvas  
20 x 16 inches



Catalogue Design: Shazzi Thomas